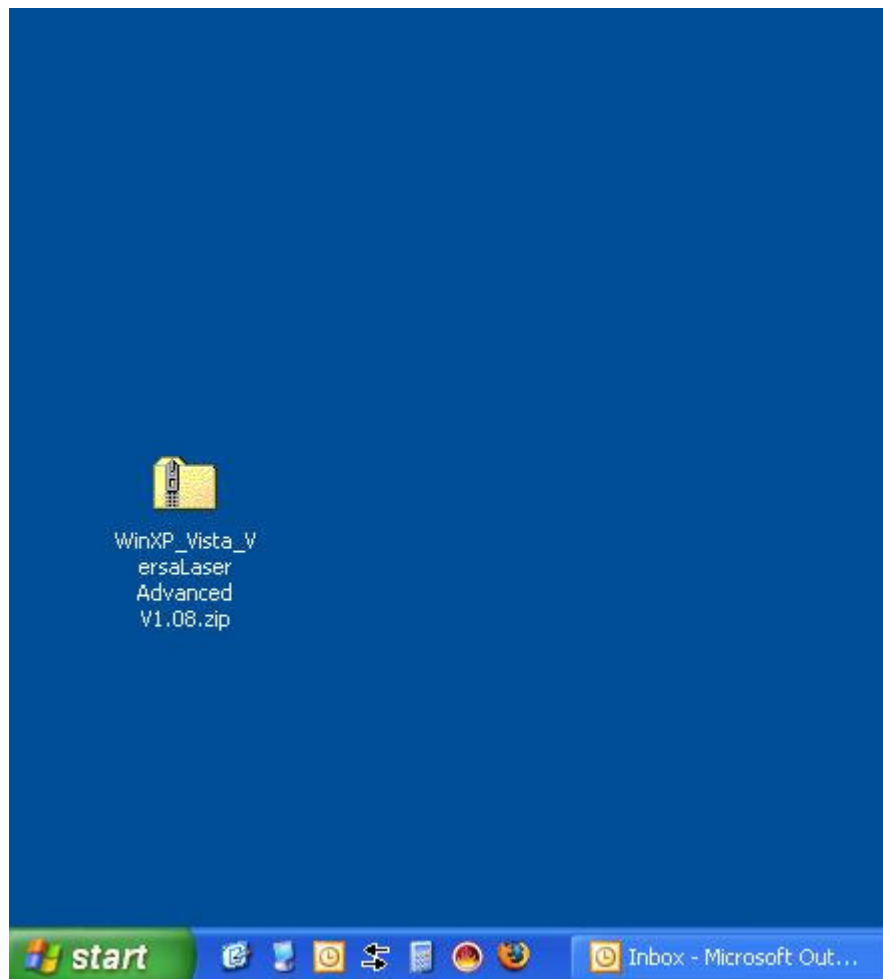


# Universal Laser Systems Printer Driver Installation Guide

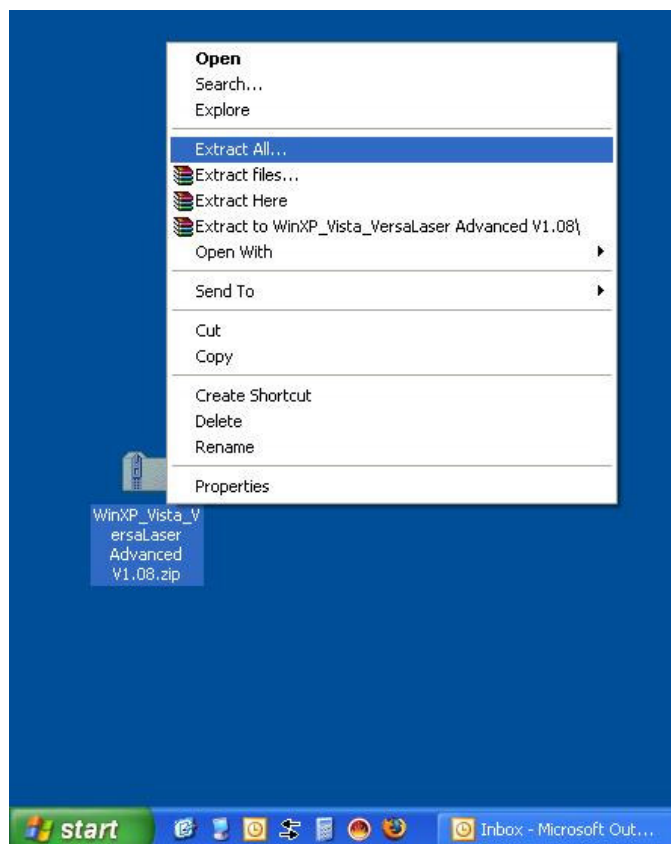
This quick install guide will show, step by step, how to install the printer drivers that have been downloaded from the Universal Laser Systems FTP site.

\*\*\*\*\*  
This procedure is used only as an example. The ZIP file you download will probably have a different name as well as the ULS engraver you are using. **For this example only**, the engraver model is the **VL-200** and the ZIP file downloaded is called **WinXP\_Vista\_VersaLaser Advanced V1.08.zip**.  
\*\*\*\*\*

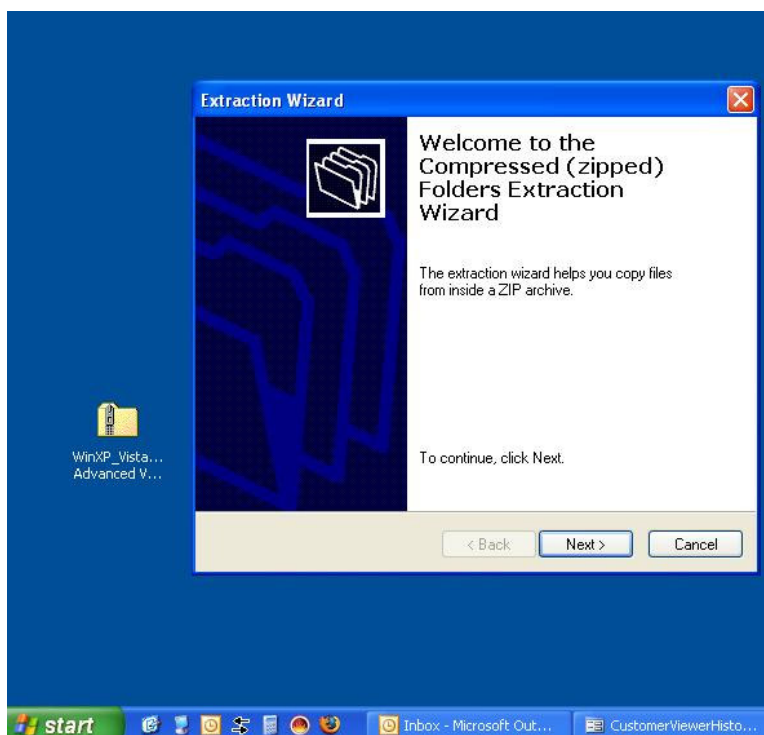
**Step 1** – The ZIP file downloaded from the Universal Laser Systems FTP site appears on your desktop. In this example, the downloaded file is called **WinXP\_Vista\_VersaLaser Advanced V1.08.zip**. The file you download will probably have a different name but the install procedure is the same, regardless of ZIP file name.



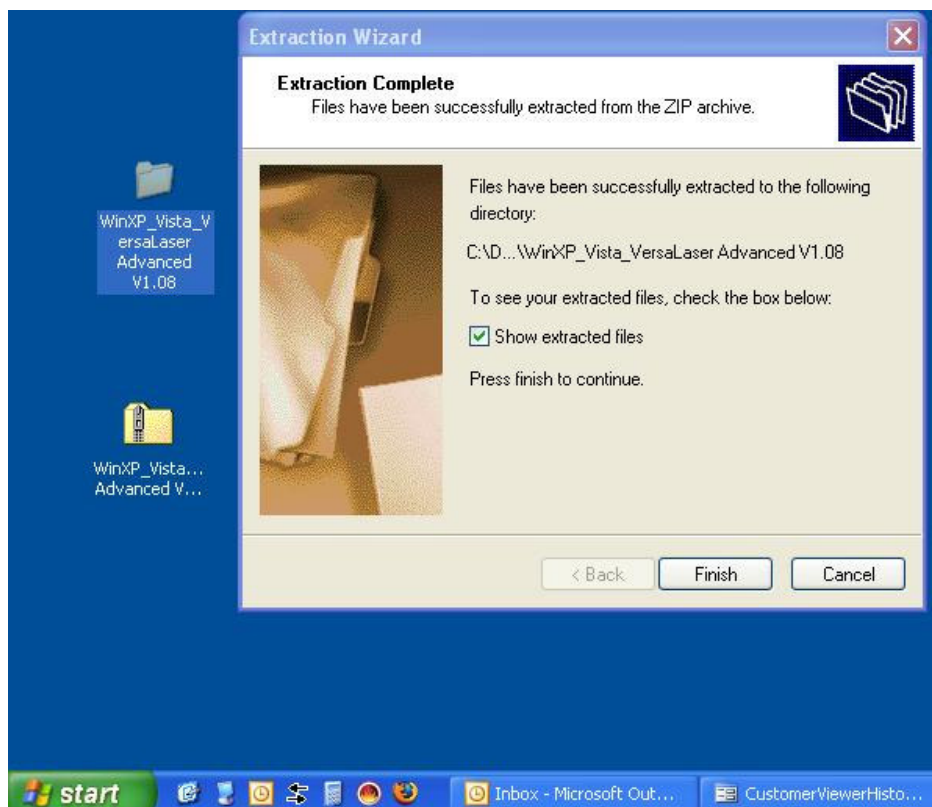
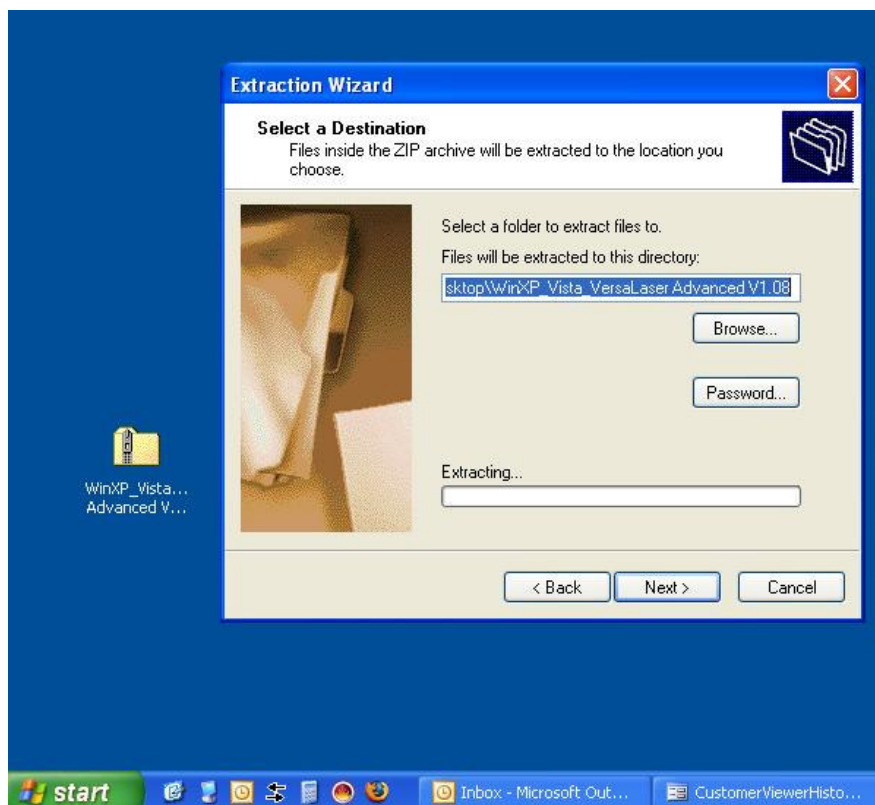
**Step 2** – Extract the contents of the folder by right clicking on the .zip file and selecting **Extract All...**:



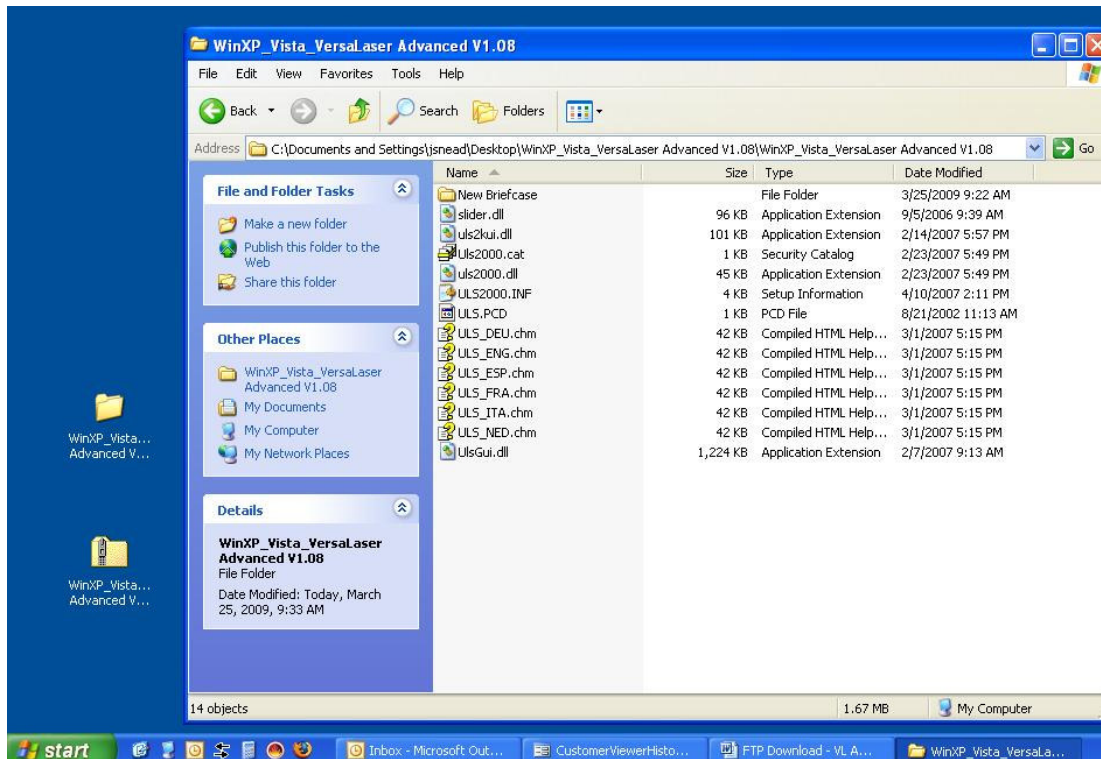
**Step 3** – Use the wizard to extract the driver folder:



**Step 4** – Continue with the wizard to finish extracting the driver folder to your desktop:



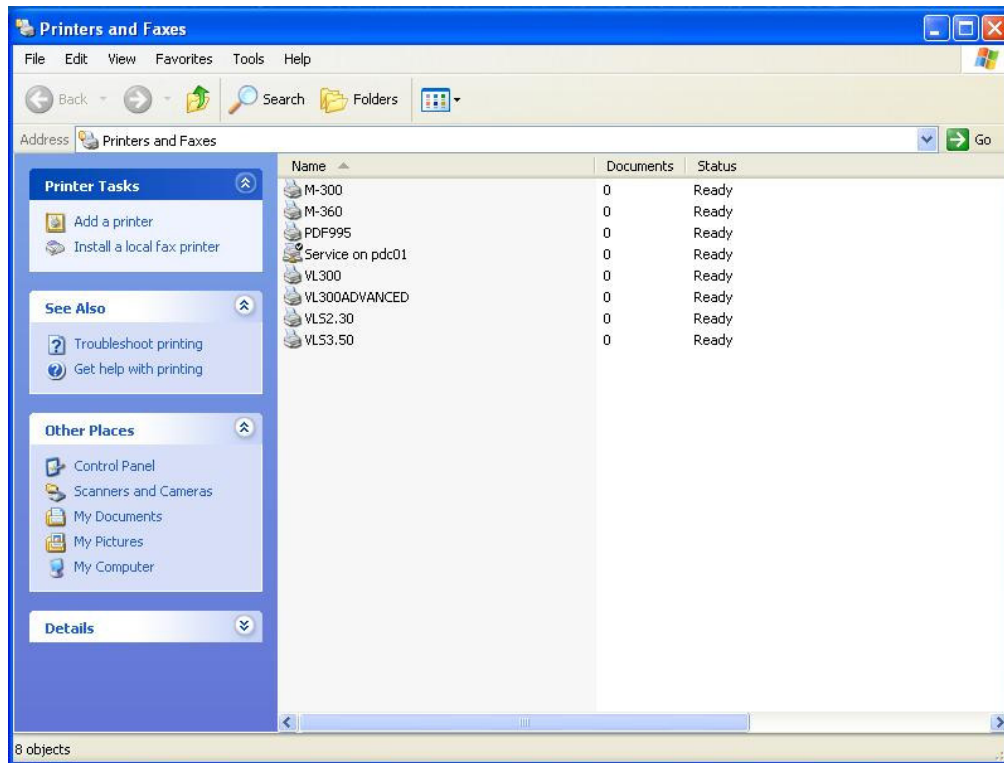
**Step 5** – After the extraction wizard closes, the extracted folder - **WinXP\_Vista\_VersaLaser Advanced V1.08** - appears on your desktop. This is the folder that you will shortly be navigating to for the driver installation file.



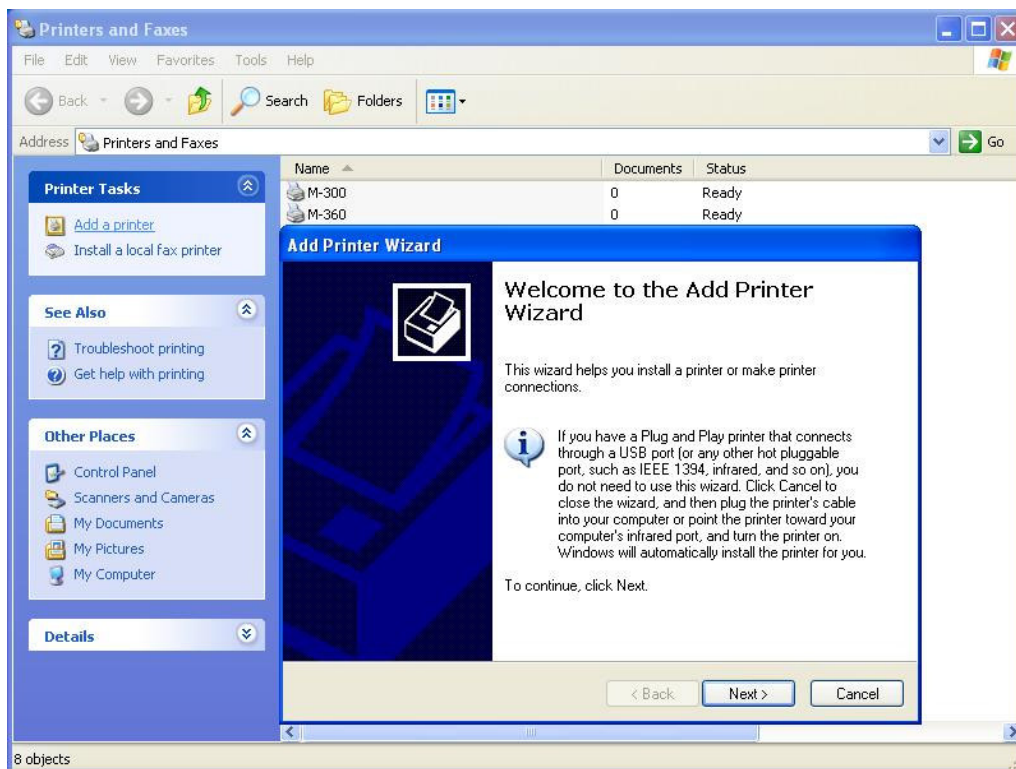
**Step 6** – Open your printers folder:



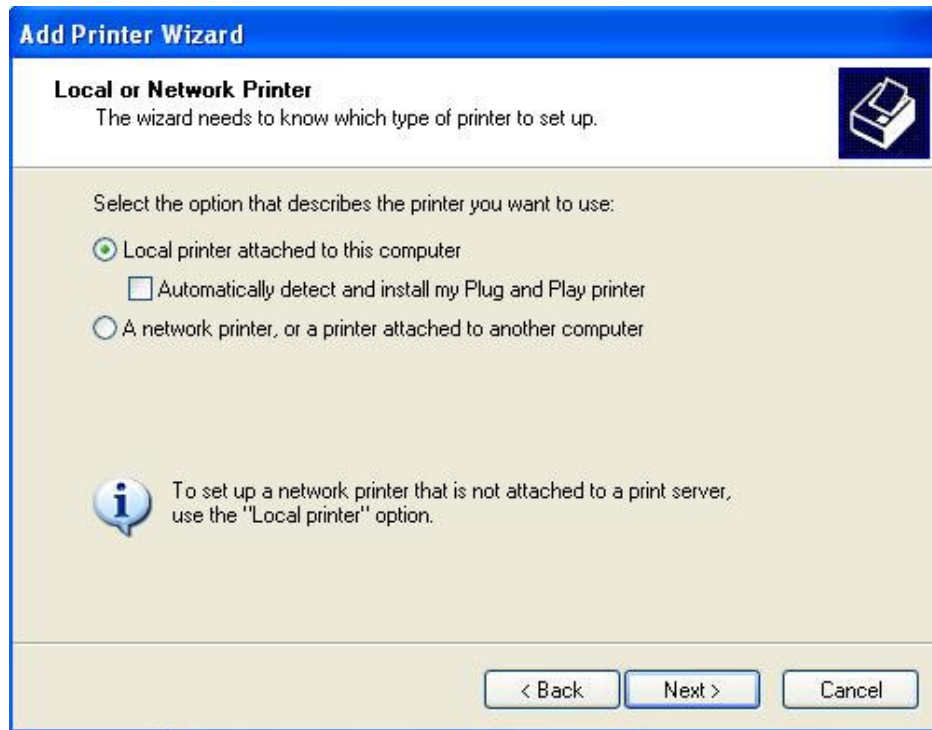
**Step 7** – The printers folder opens:



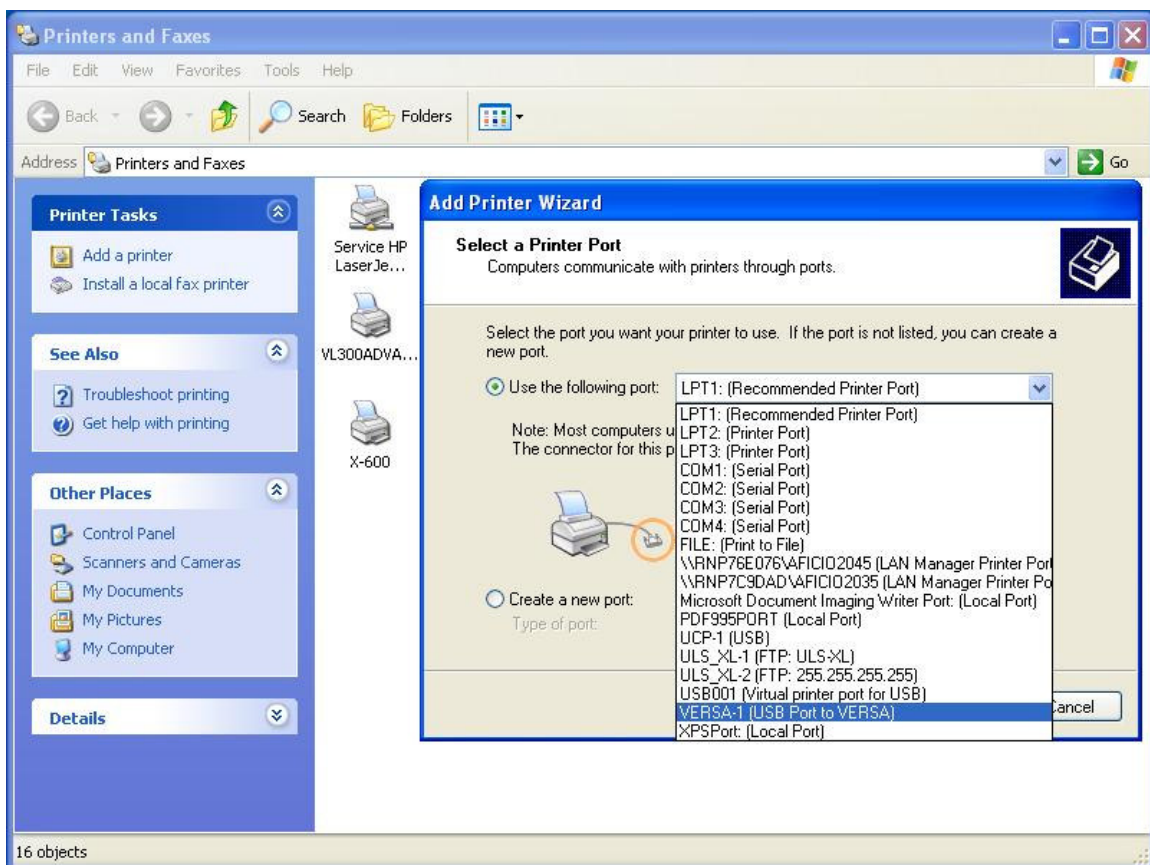
**Step 8** – Start the Add Printer Wizard by clicking on the **Add a Printer** link to the left and click **Next**:



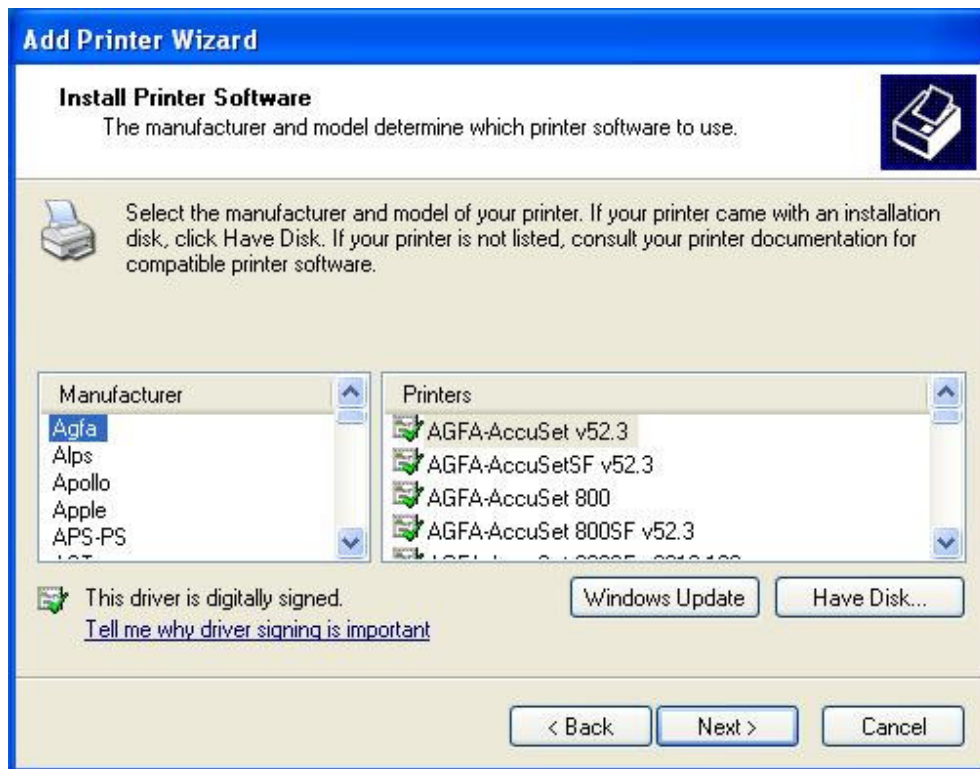
**Step 9** – Follow the steps of the printer wizard. Select **Local printer attached to this computer** and make sure that **Automatically detect and install my Plug and Play printer** is unchecked and click **Next**:



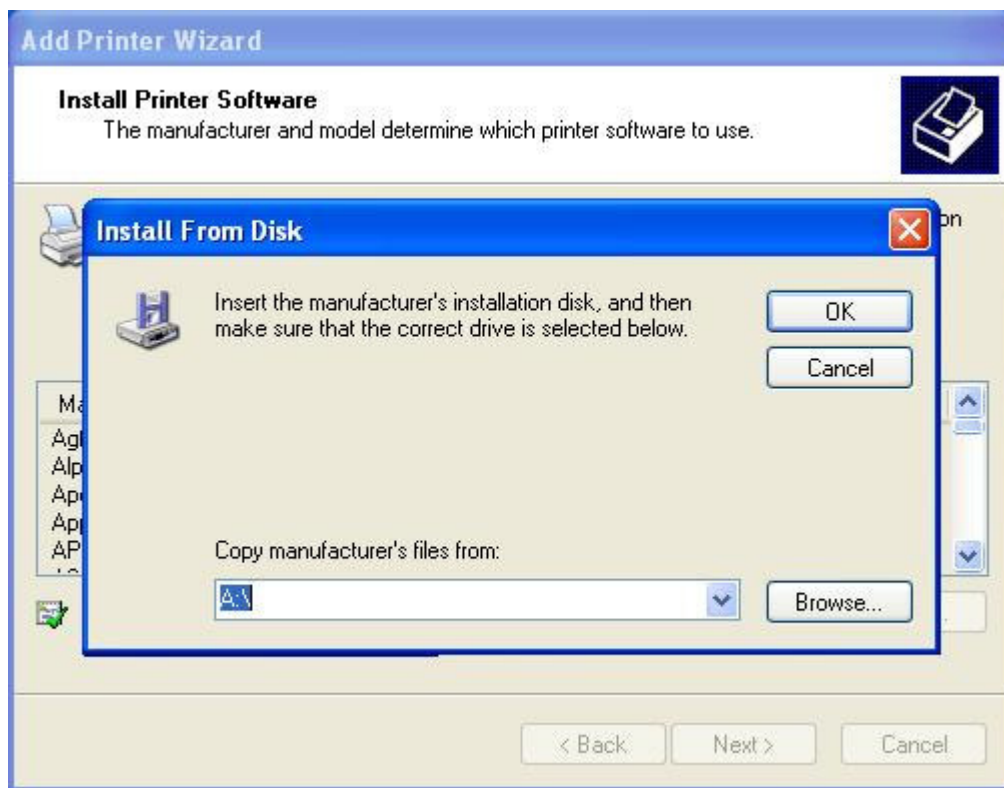
**Step 10** – Select **Use the following port** and select the **VERSA-1(USB Port to Versa)** and click **Next**:

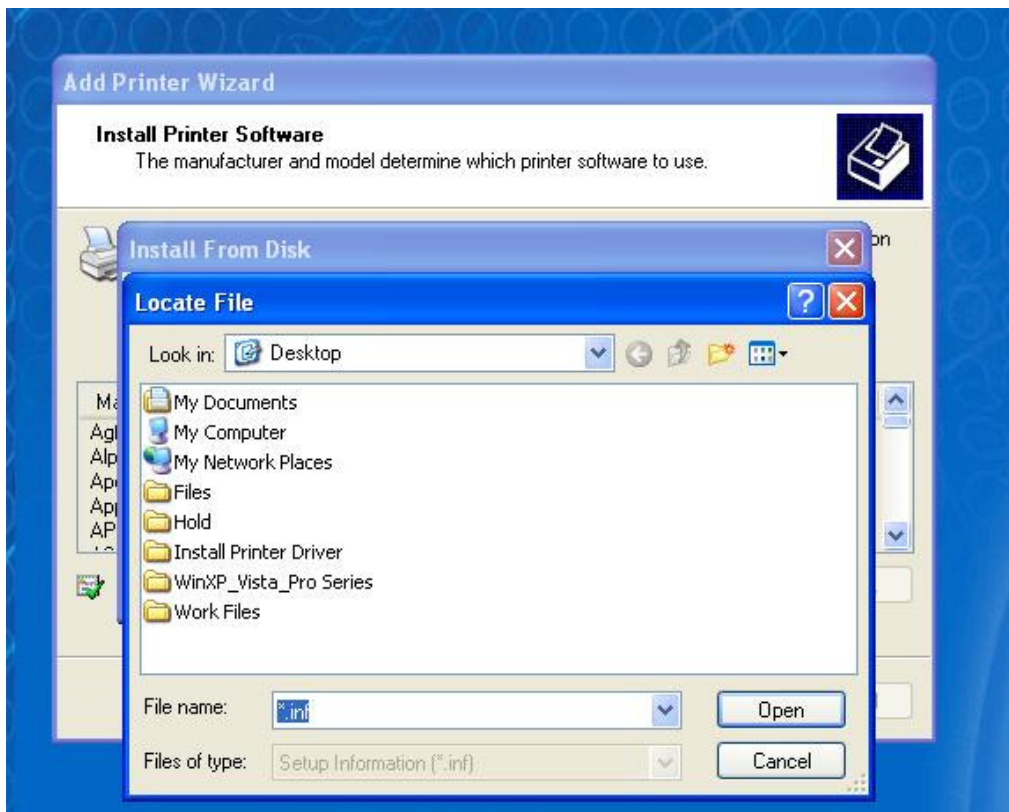


**Step 11** – The **Install Printer Software** dialog box opens. Select the **Have Disk...** button:

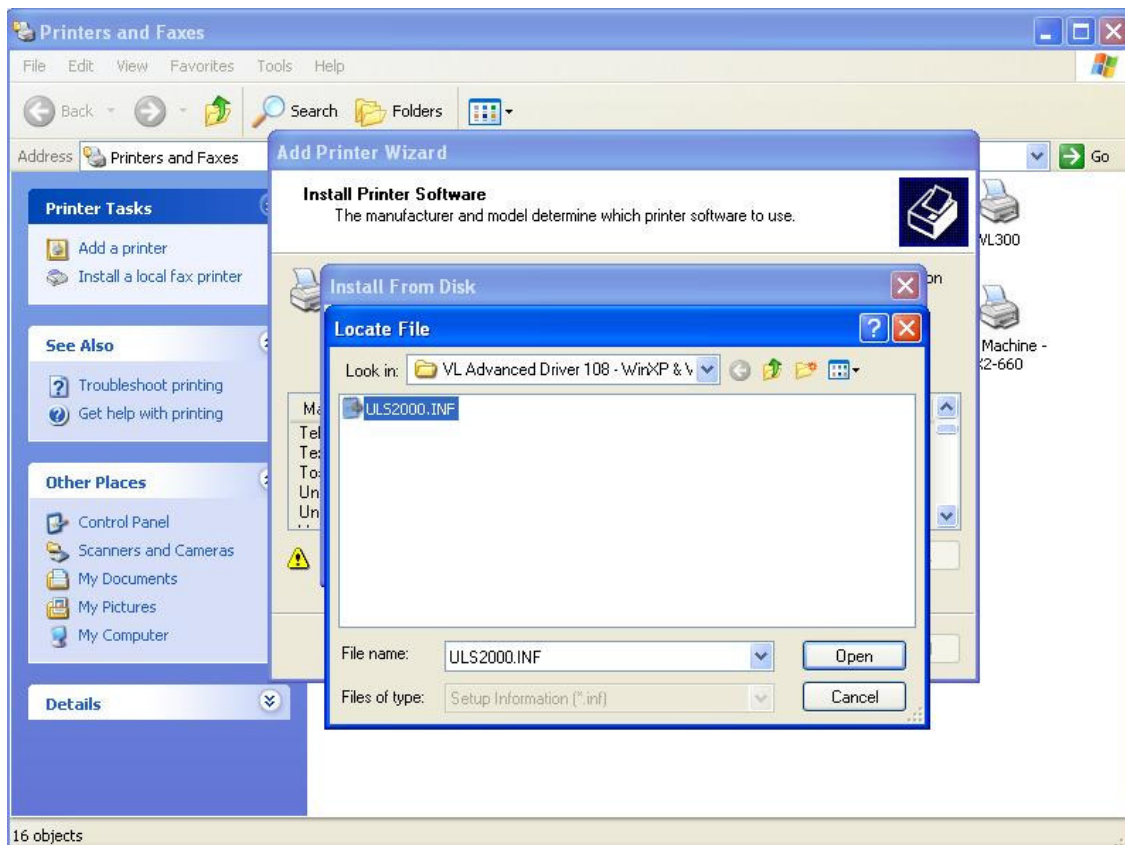


**Step 12** – The **Install From Disk** window opens. Click the **Browse** button and navigate to the **WinXP\_Vista\_VersaLaser Advanced V1.08** folder on your desktop:

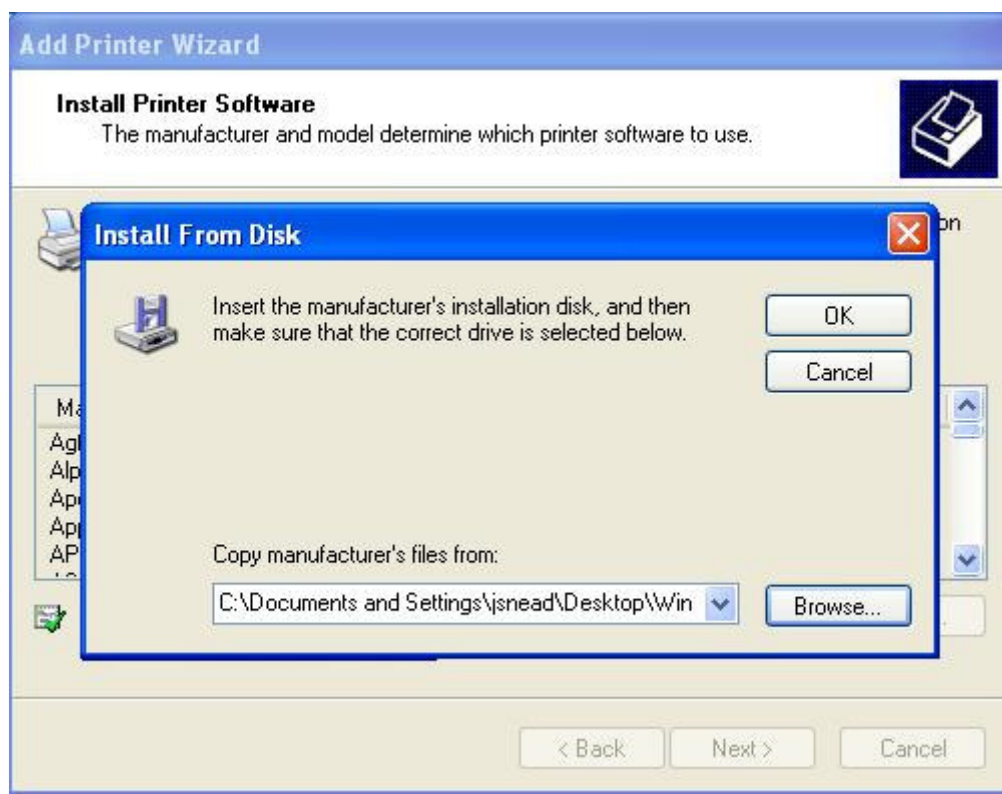




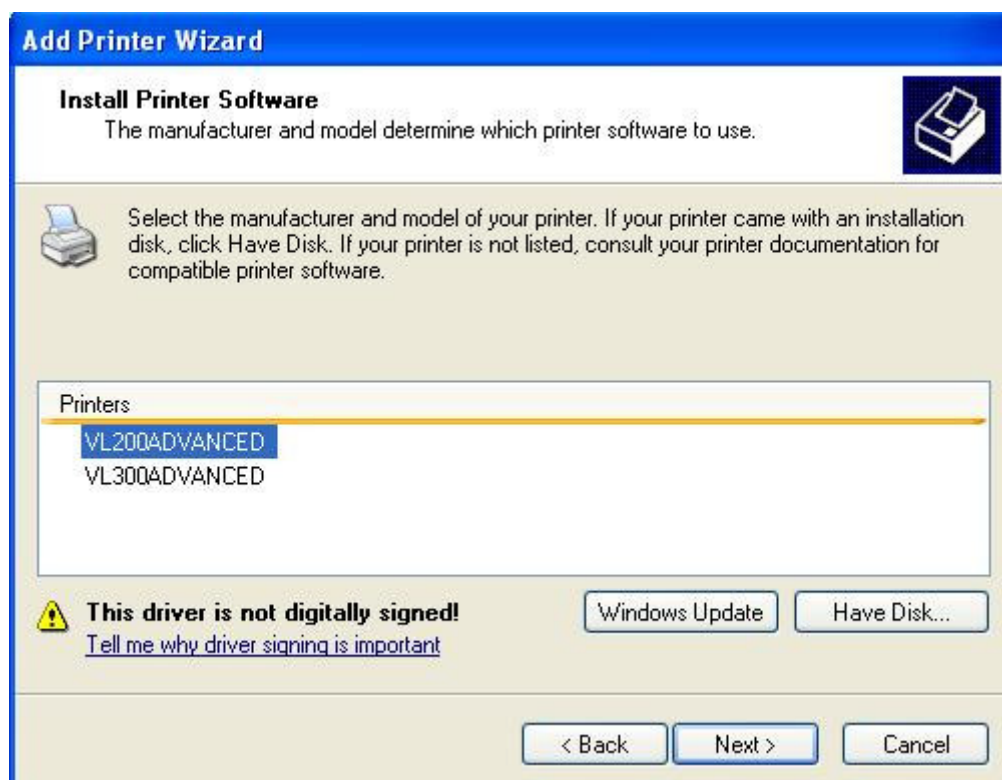
**Step 13** – Once inside the **WinXP\_Vista\_VersaLaser Advanced V1.08** folder, select the **ULS2000.INF** file and click **Open**.



**Step 14** – Click Ok on the **Install From Disk** dialog box:



**Step 15** – Select the model engraver that you wish to install a driver for; in this case, I have selected the **VL-200** driver to be installed. Click the **Next** button to continue:



**Step 16** – The following window appears. Verify that the printer name is the model of engraver that you selected in the last step. If you want this as the default printer then click **Yes**; otherwise click **No**. Click **Next** to continue the installation:



The screenshot shows the 'Add Printer Wizard' window, specifically the 'Name Your Printer' step. The window has a blue title bar with the text 'Add Printer Wizard'. Below the title bar, the section is titled 'Name Your Printer' with a printer icon in the top right corner. The text says 'You must assign a name to this printer.' Below this, there is a paragraph: 'Type a name for this printer. Because some programs do not support printer and server name combinations of more than 31 characters, it is best to keep the name as short as possible.' A text box labeled 'Printer name:' contains the text 'VL200ADVANCED'. Below the text box, there is a question: 'Do you want to use this printer as the default printer?' with two radio buttons: 'Yes' (unselected) and 'No' (selected). At the bottom right, there are three buttons: '< Back', 'Next >', and 'Cancel'.

**Add Printer Wizard**

**Name Your Printer**  
You must assign a name to this printer.

Type a name for this printer. Because some programs do not support printer and server name combinations of more than 31 characters, it is best to keep the name as short as possible.

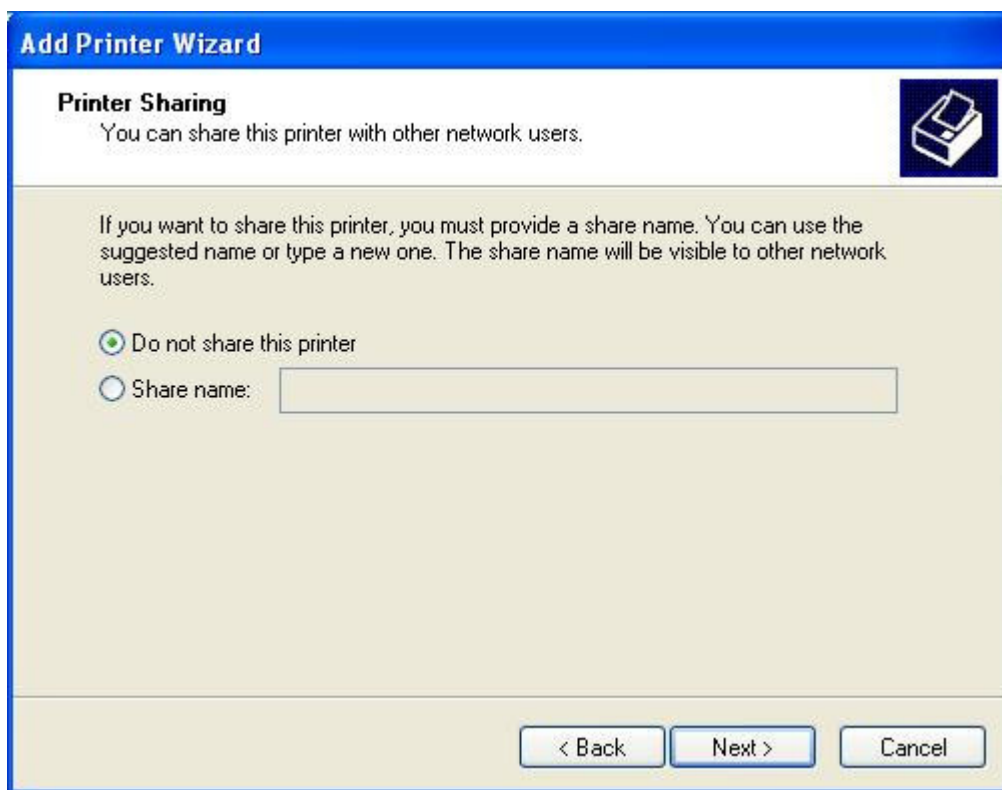
Printer name:  
VL200ADVANCED

Do you want to use this printer as the default printer?

☐ Yes  
☒ No

< Back   Next >   Cancel

**Step 17** – The following window appears. Click **Do not share this printer** and click **Next** to continue the installation:



The screenshot shows the 'Add Printer Wizard' window, specifically the 'Printer Sharing' step. The window has a blue title bar with the text 'Add Printer Wizard'. Below the title bar, the section is titled 'Printer Sharing' with a printer icon in the top right corner. The text says 'You can share this printer with other network users.' Below this, there is a paragraph: 'If you want to share this printer, you must provide a share name. You can use the suggested name or type a new one. The share name will be visible to other network users.' There are two radio buttons: 'Do not share this printer' (selected) and 'Share name:' (unselected). The 'Share name:' option has an empty text box next to it. At the bottom right, there are three buttons: '< Back', 'Next >', and 'Cancel'.

**Add Printer Wizard**

**Printer Sharing**  
You can share this printer with other network users.

If you want to share this printer, you must provide a share name. You can use the suggested name or type a new one. The share name will be visible to other network users.

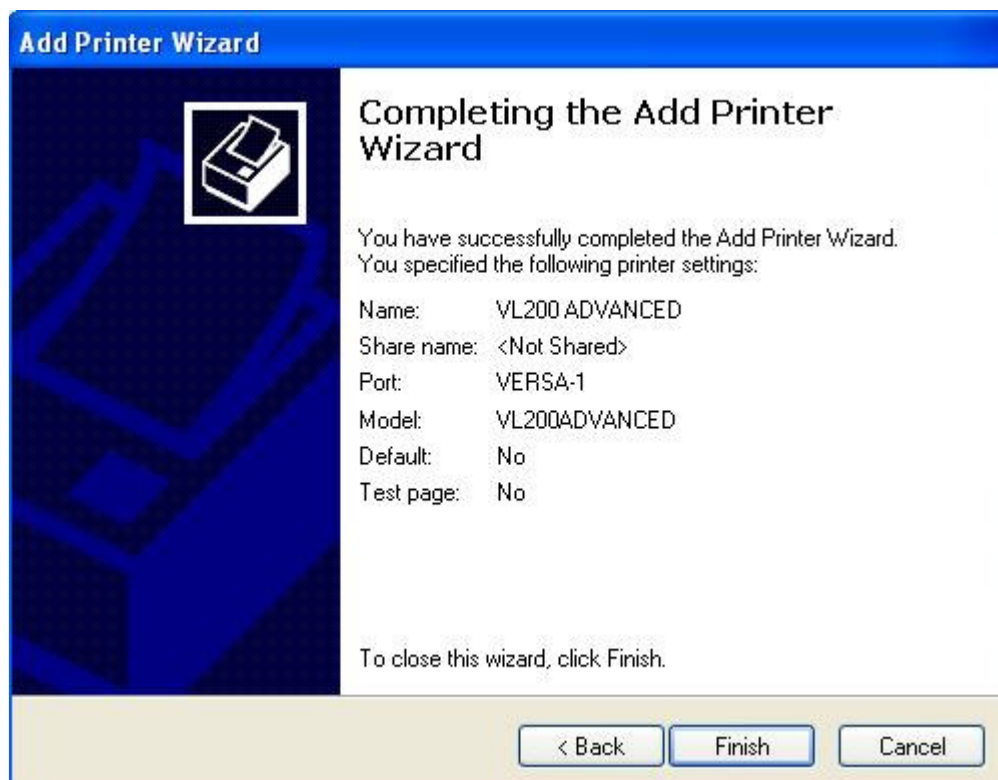
☒ Do not share this printer  
☐ Share name:

< Back   Next >   Cancel

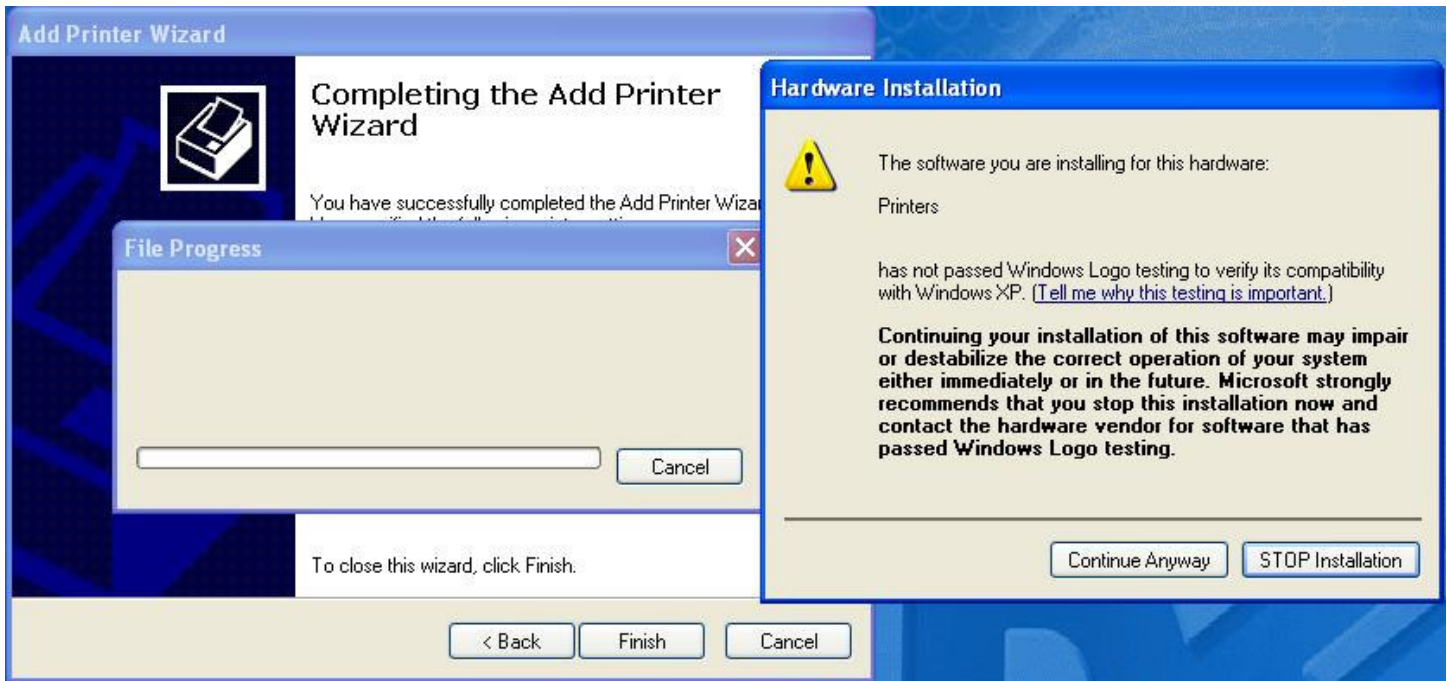
**Step 18** – The following window appears. Click **No** for **Do you want to print a test page** and click **Next** to continue the installation:



**Step 19** – The following window appears. Click **Finish** to complete the installation:



**Step 20** – The following appears. The File Progress boxes will close on their own after file transfers are complete; usually in less than a minute. The Hardware Installation dialog box appears as well stating that this software has not passed Windows Logo testing. Click **Continue Anyway** and the installation will be complete; all open dialog boxes on the desktop will now close by themselves:



**Step 21** – Open the printers and faxes folder to verify that the new printer driver has been successfully installed. The installation is now complete:

