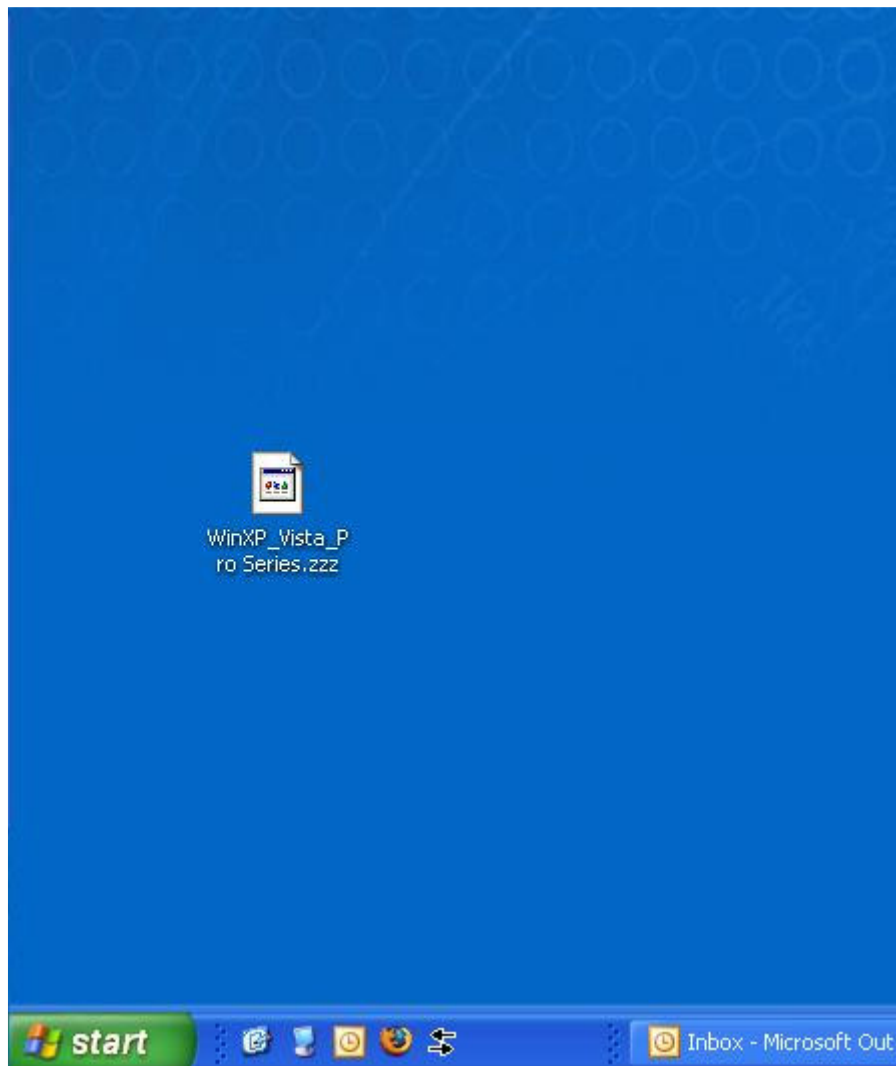


Universal Laser Systems Printer Driver Installation Guide

This quick install guide will show step by step how to install the printer drivers provided by Universal Laser Systems for use with their engravers. This example will install a new driver for a V-460 engraver from an emailed zip file. You can use this same procedure to install drivers from a CD-ROM as well.

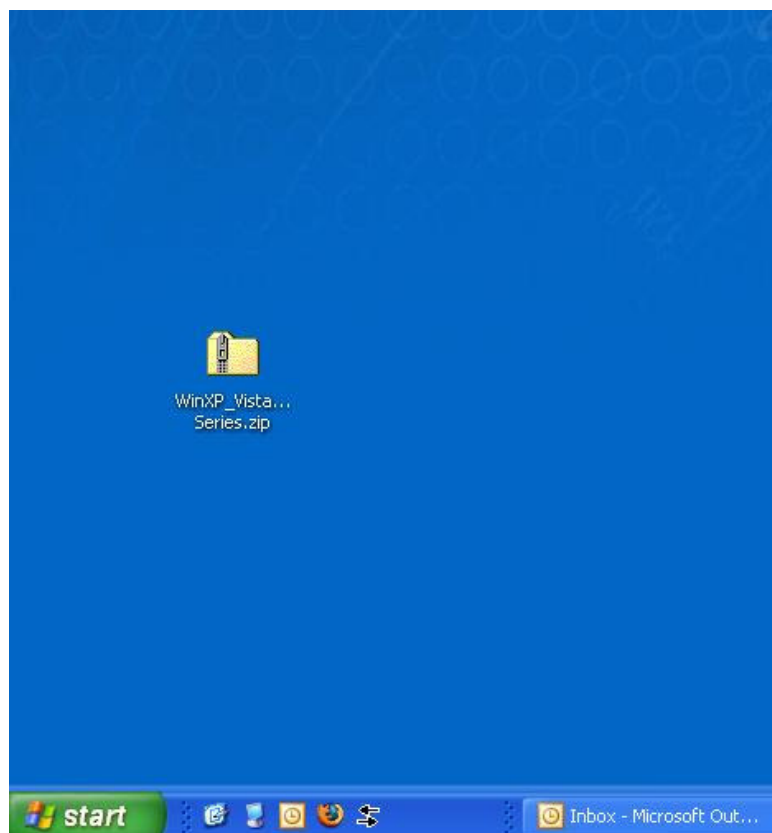
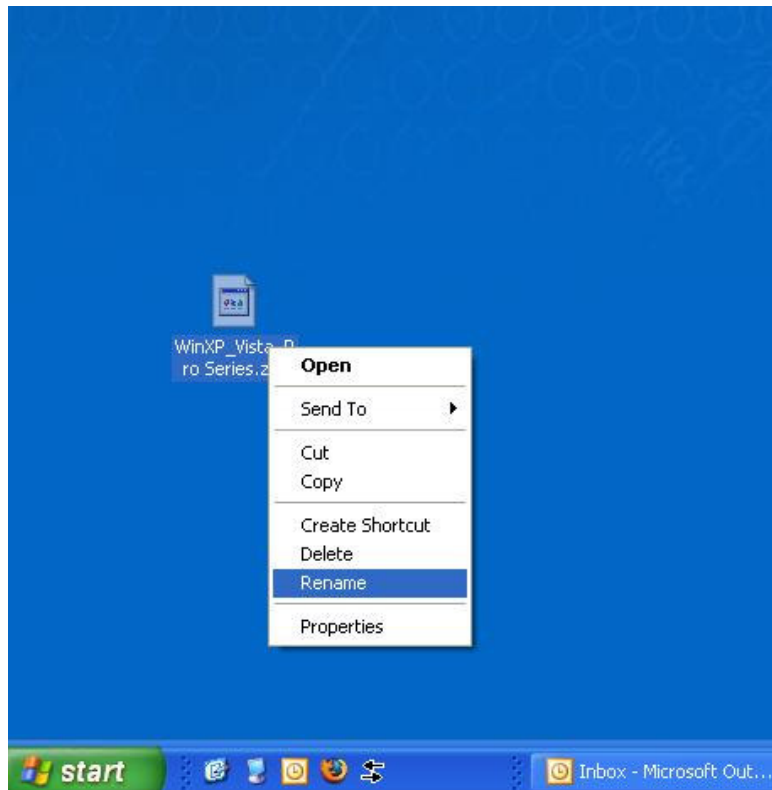
Step 1 – This assumes that you have just received an email from the Universal Laser Systems support department with the driver as an attachment. Due to most email servers blocking .zip files, zip files are sent with their extension changed from .zip to either .piz or .zzz. In this example the received file will be called **WinXP_Vista_Pro Series.zzz**. This file contains the new driver for the V-460 engraver for use with either Windows XP or Windows Vista.

Step 2 – Download the attached file to your computer's desktop:



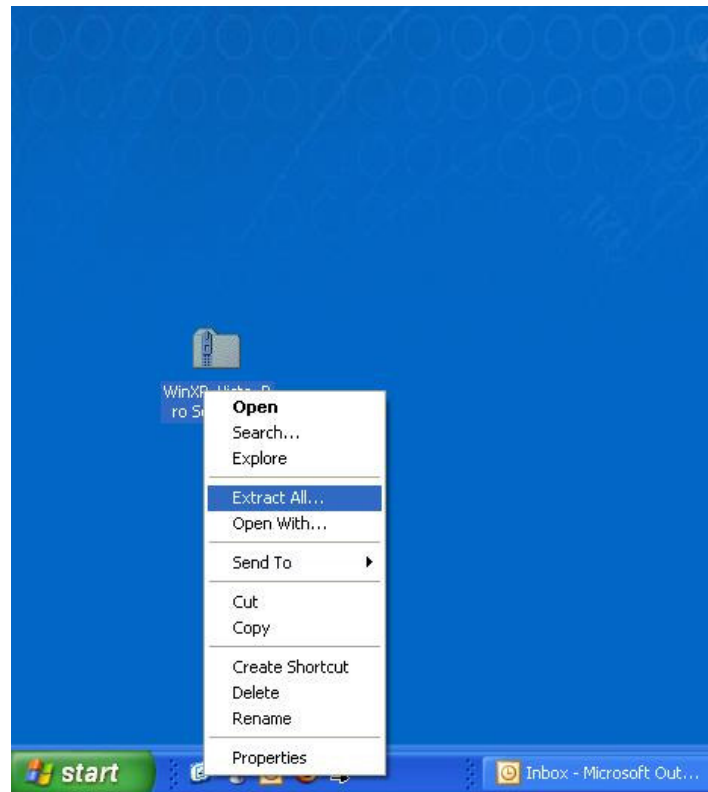
The **WinXP_Vista_Pro Series.zzz** file is now on your desktop.

Step 3 – Change the name of your file from **WinXP_Vista_Pro Series.zzz** to **WinXP_Vista_Pro Series.zip**. Right click on the file and select **Rename**. Rename the file extension from .zzz to .zip.

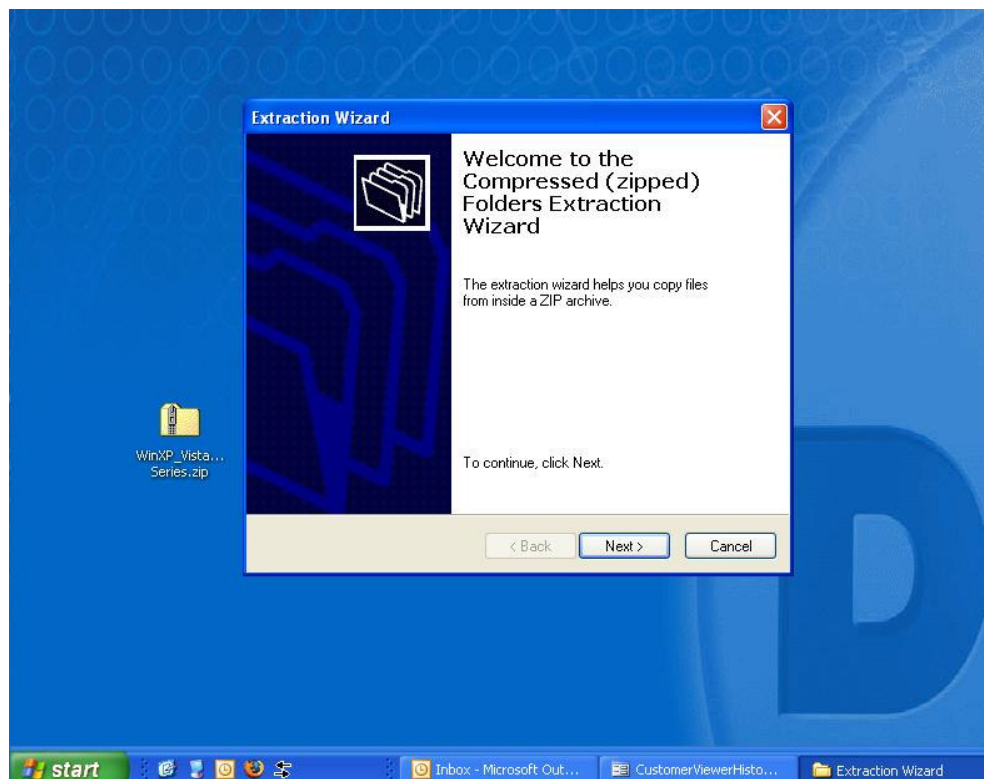


The **WinXP_Vista_Pro Series.zip** now shows up on the desktop as a .zip folder.

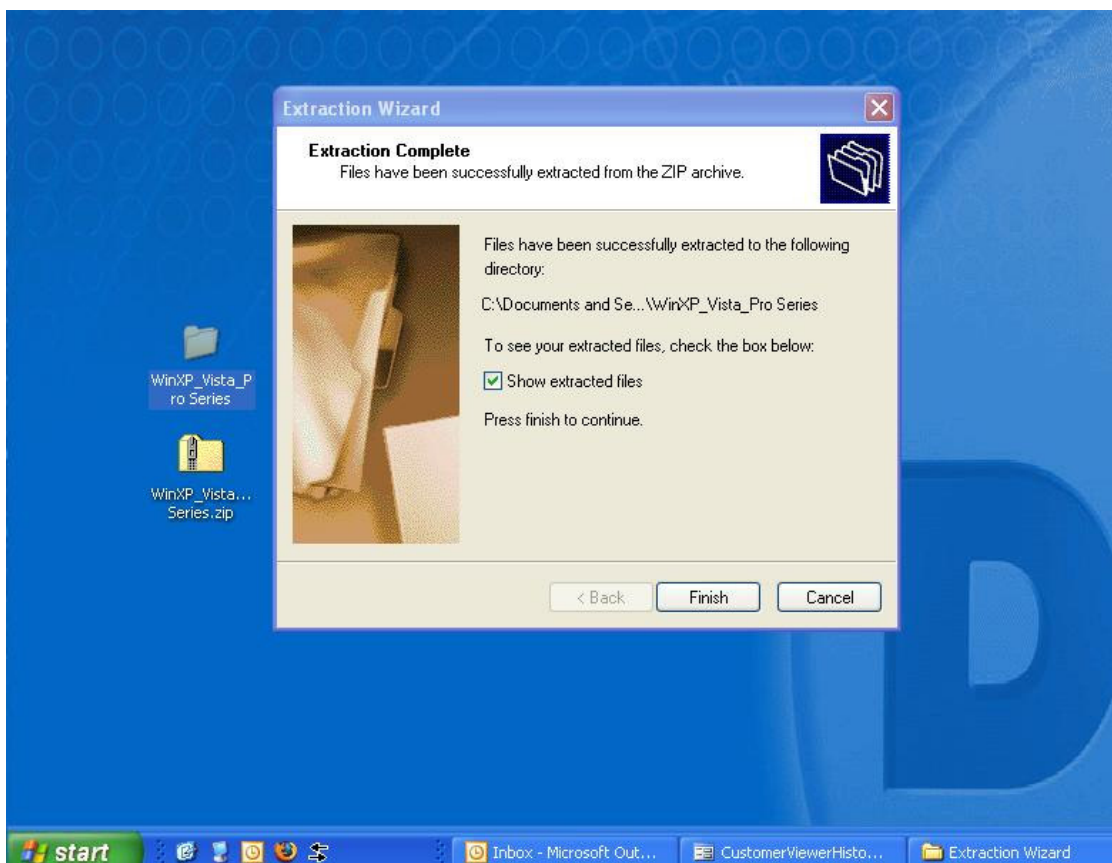
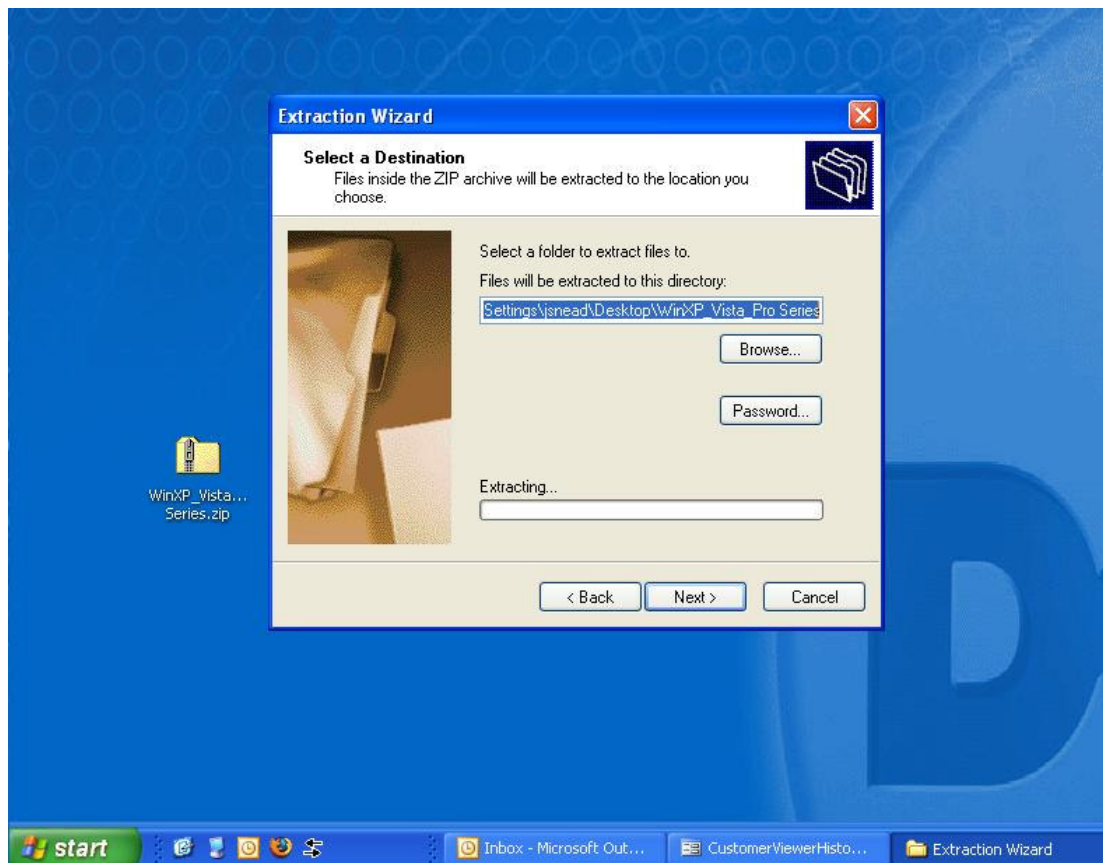
Step 4 – Extract the contents of the folder by right clicking on the .zip file and selecting **Extract All...**:



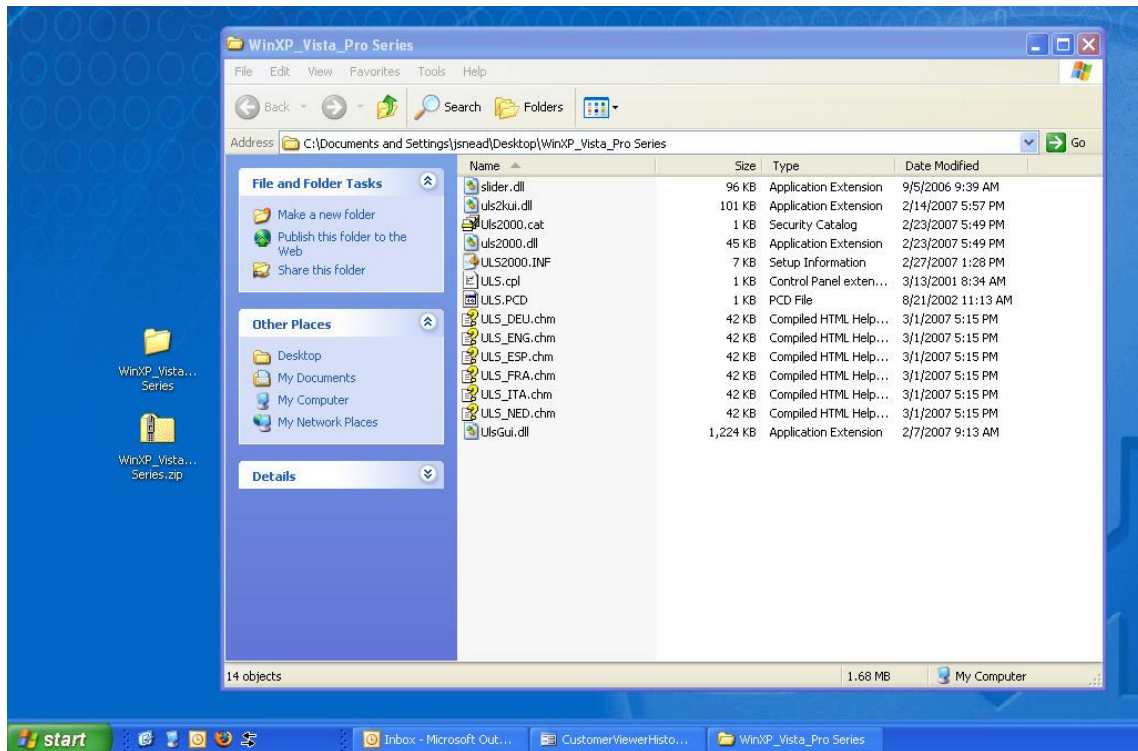
Step 5 – Use the wizard to extract the driver folder:



Step 6 – Continue with the wizard to finish extracting the driver folder to your desktop:



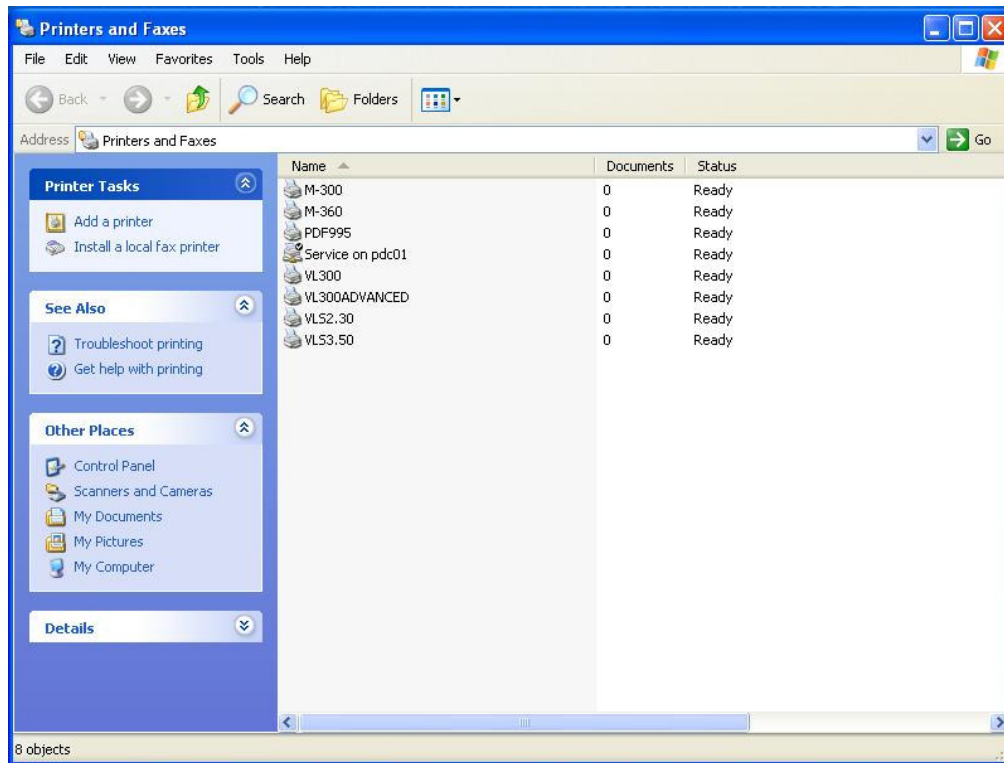
Step 7 – After the extraction wizard closes, the extracted folder - **WinXP_Vista_Pro Series** - appears on your desktop. This is the folder that you will shortly be navigating to for the driver installation file.



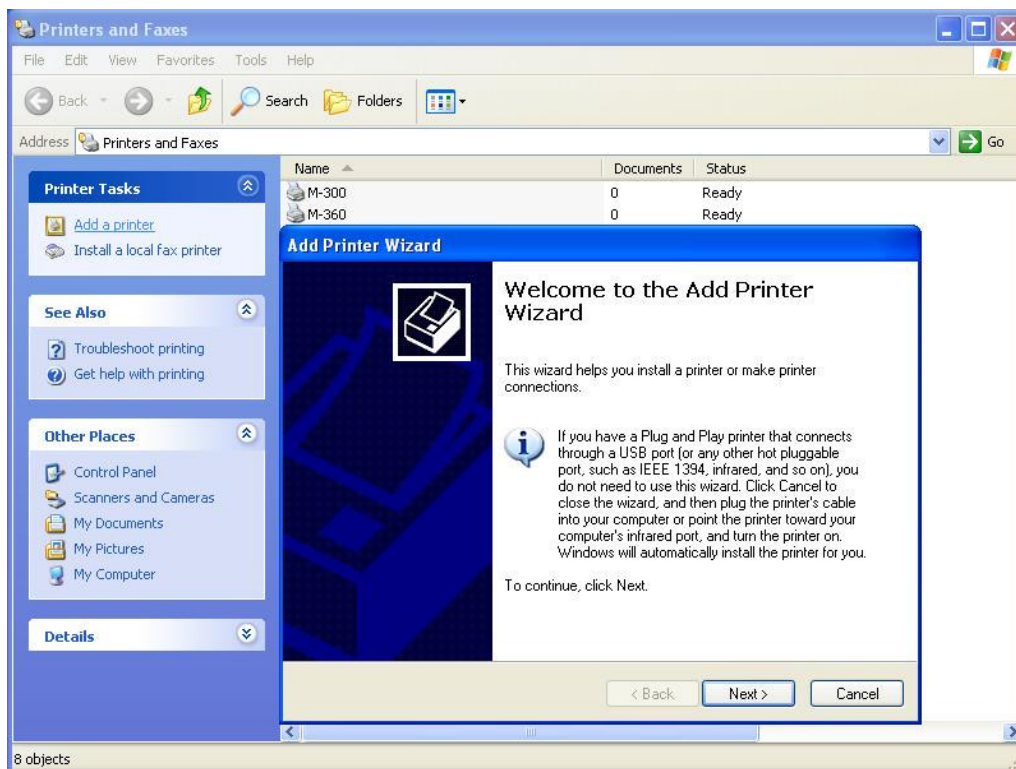
Step 8 – Open your printers folder:



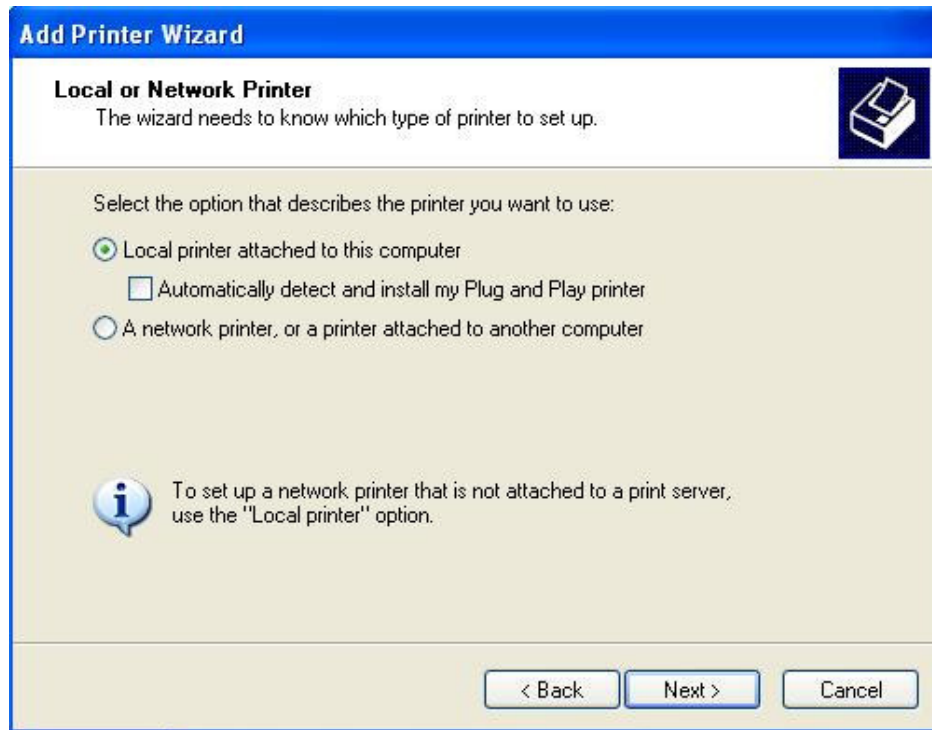
Step 9 – The printers folder opens:



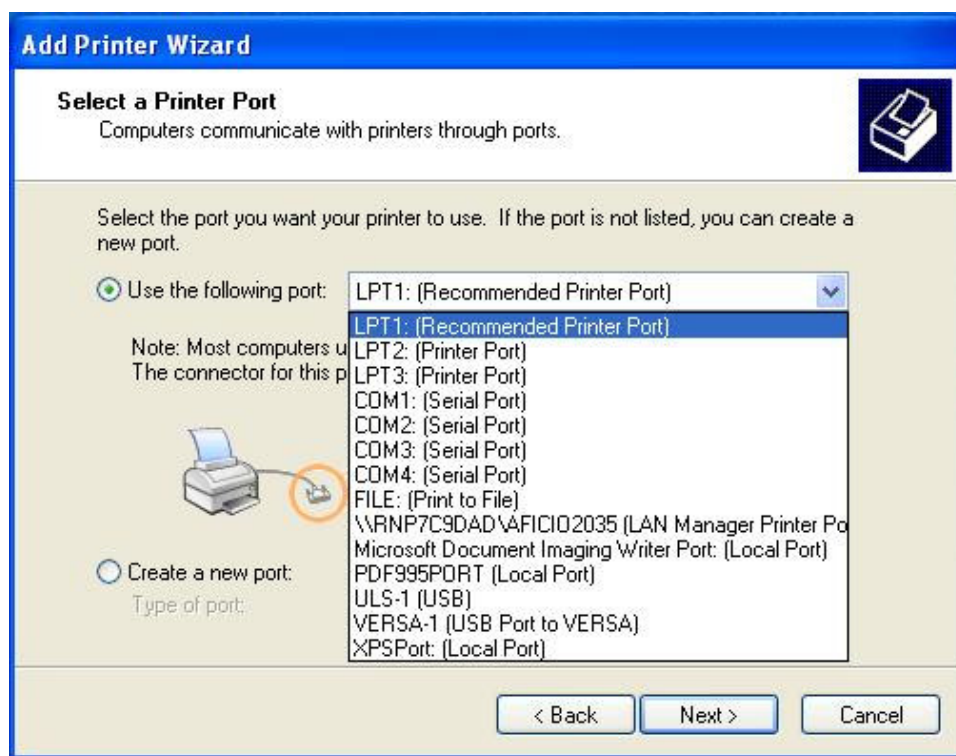
Step 10 – Start the Add Printer Wizard by clicking on the **Add a Printer** link to the left and click **Next**:



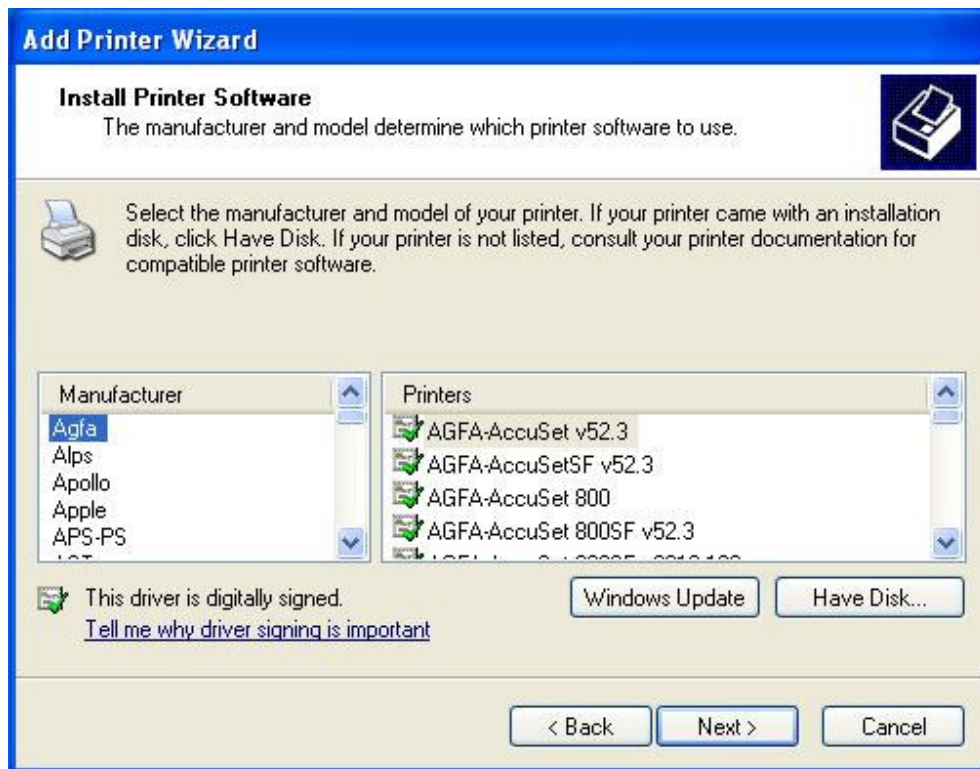
Step 11 – Follow the steps of the printer wizard. Select **Local printer attached to this computer** and make sure that **Automatically detect and install my Plug and Play printer** is unchecked and click **Next**:



Step 12 – Select Use the following port and select the correct port for your installation. If you are using a USB cable out of the back of your computer to your engraver, then select **ULS-1 (USB)** or other applicable USB port. Select USB even if you are using a USB (computer side) to Parallel (engraver side) conversion cable. If you are connecting to the engraver by a parallel to parallel cable then select **LPT1** and click **Next**:

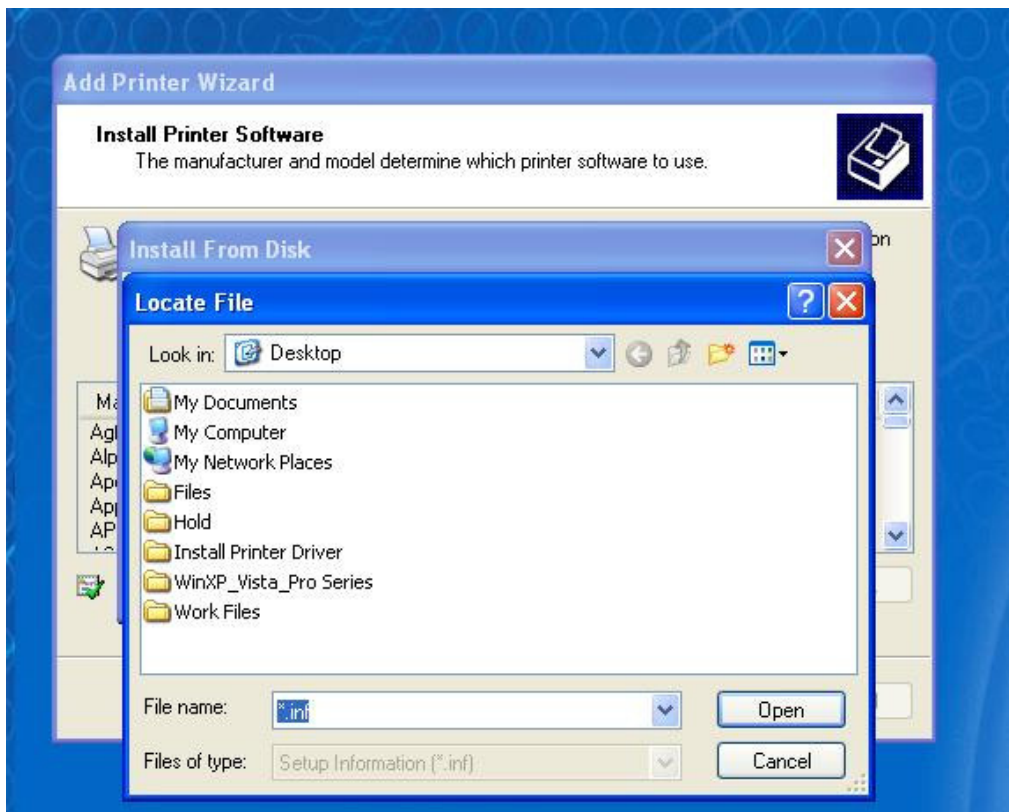


Step 13 – The **Install Printer Software** dialog box opens. Select the **Have Disk...** button:

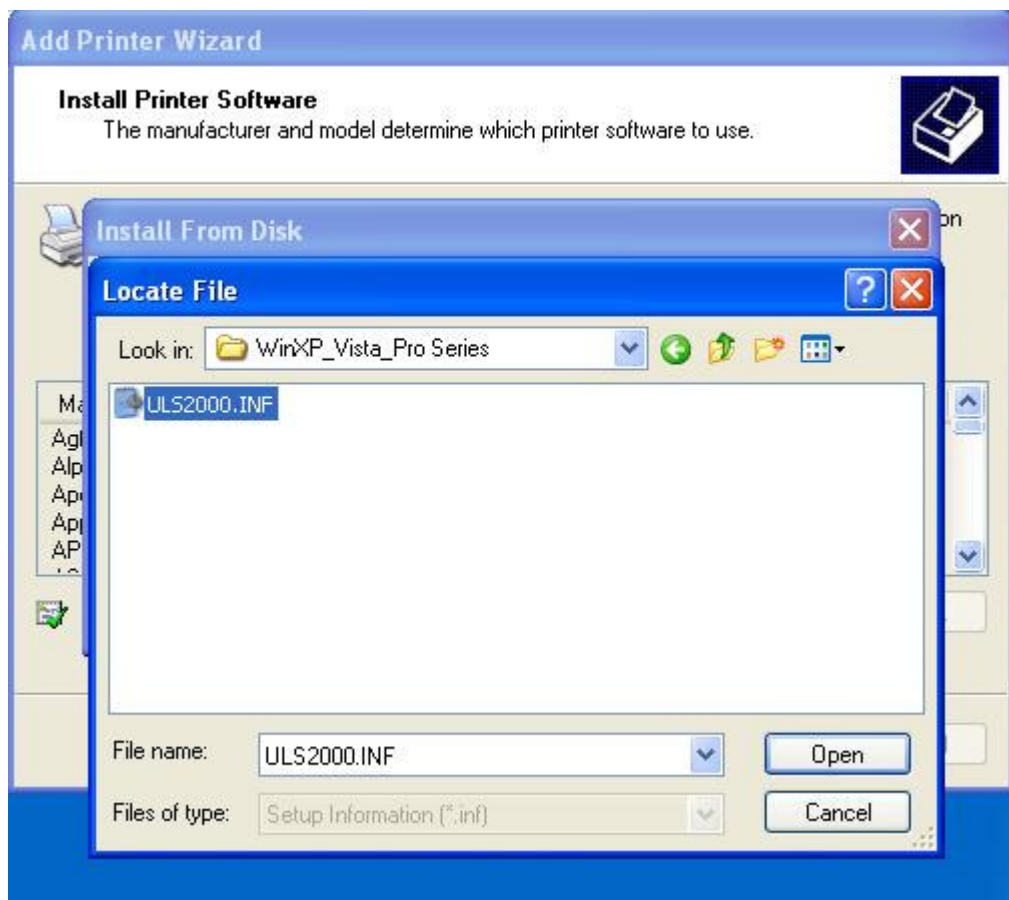


Step 14 – The **Install From Disk** window opens. Click the **Browse** button and navigate to the **WinXP_Vista_Pro Series** folder on your desktop:

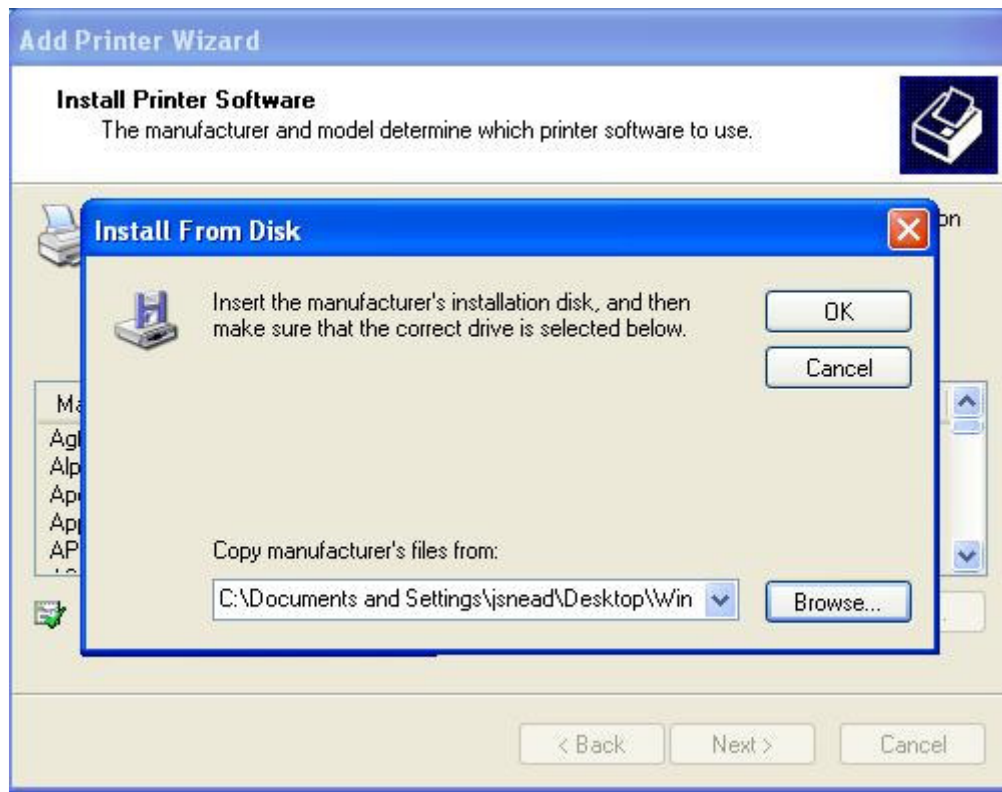




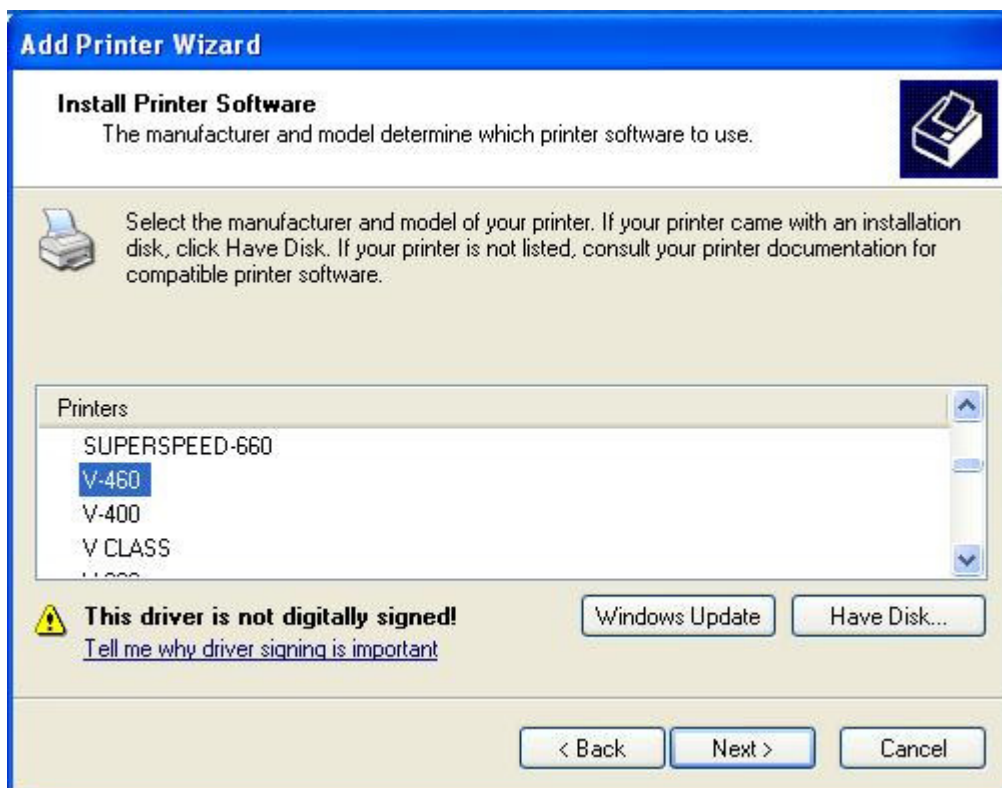
Step 15 – Once inside the **WinXP_Vista_Pro Series** folder, select the **ULS2000.INF** file and click **Open**.



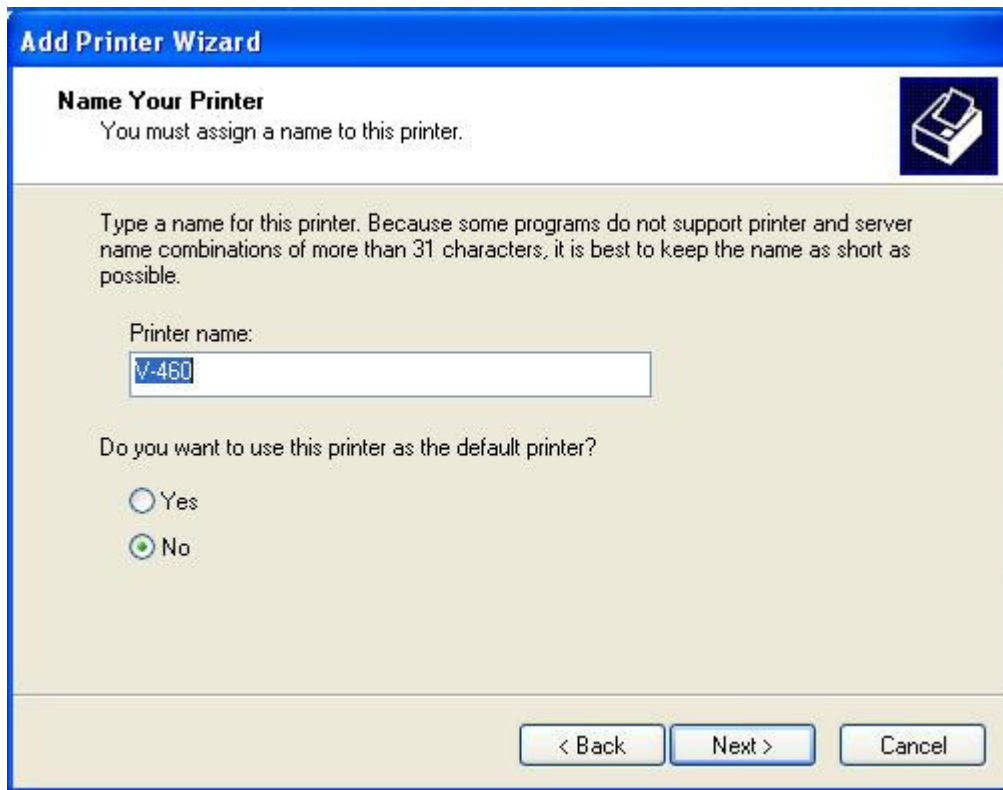
Step 16 – Click Ok on the **Install From Disk** dialog box:



Step 17 – Select the model engraver that you wish to install a driver for; in this case, I have selected the **V-460** driver to be installed. Click the **Next** button to continue:



Step 18 – The following window appears. Verify that the printer name is the model of engraver that you selected in the last step. If you want this as the default printer then click **Yes**; otherwise click **No**. Click **Next** to continue the installation:



The screenshot shows the 'Add Printer Wizard' window with the 'Name Your Printer' step. The window has a blue title bar and a printer icon in the top right. The main area is light beige. It contains instructions to name the printer, a text box with 'V-460' entered, and radio buttons for 'Yes' and 'No' to set it as the default printer. Navigation buttons are at the bottom.

Add Printer Wizard

Name Your Printer
You must assign a name to this printer.

Type a name for this printer. Because some programs do not support printer and server name combinations of more than 31 characters, it is best to keep the name as short as possible.

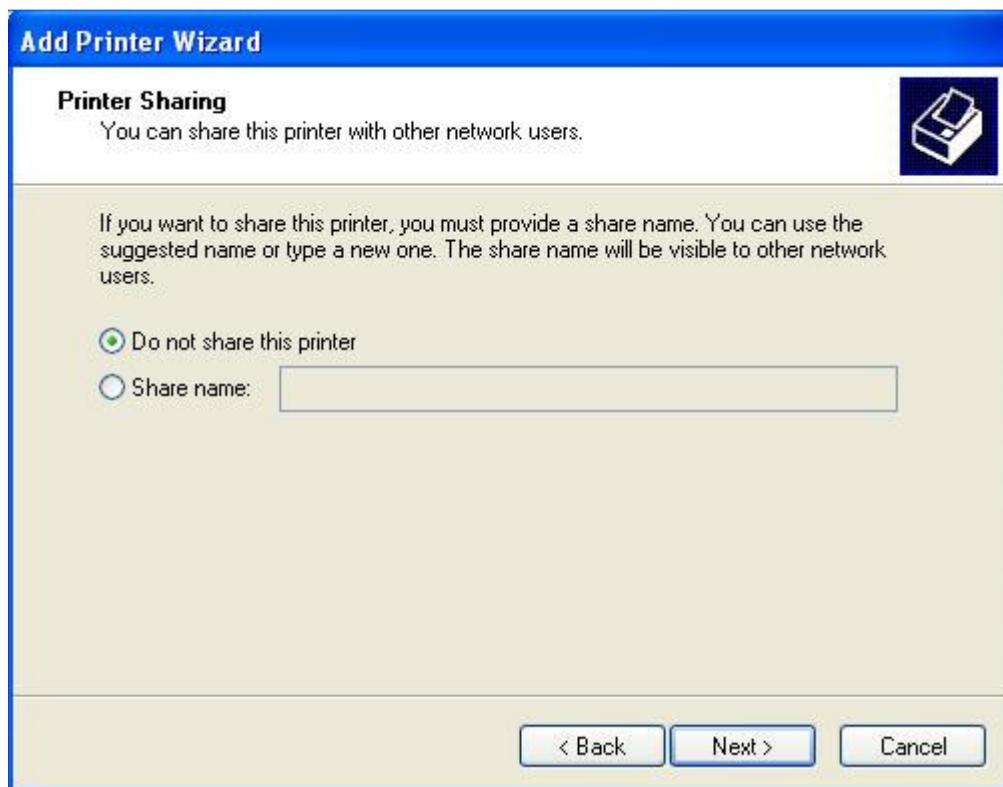
Printer name:

Do you want to use this printer as the default printer?

☐ Yes
☒ No

< Back Next > Cancel

Step 19 – The following window appears. Click **Do not share this printer** and click **Next** to continue the installation:



The screenshot shows the 'Add Printer Wizard' window with the 'Printer Sharing' step. The window has a blue title bar and a printer icon in the top right. The main area is light beige. It contains instructions about sharing the printer, radio buttons for 'Do not share this printer' (selected) and 'Share name:' (with an empty text box), and navigation buttons at the bottom.

Add Printer Wizard

Printer Sharing
You can share this printer with other network users.

If you want to share this printer, you must provide a share name. You can use the suggested name or type a new one. The share name will be visible to other network users.

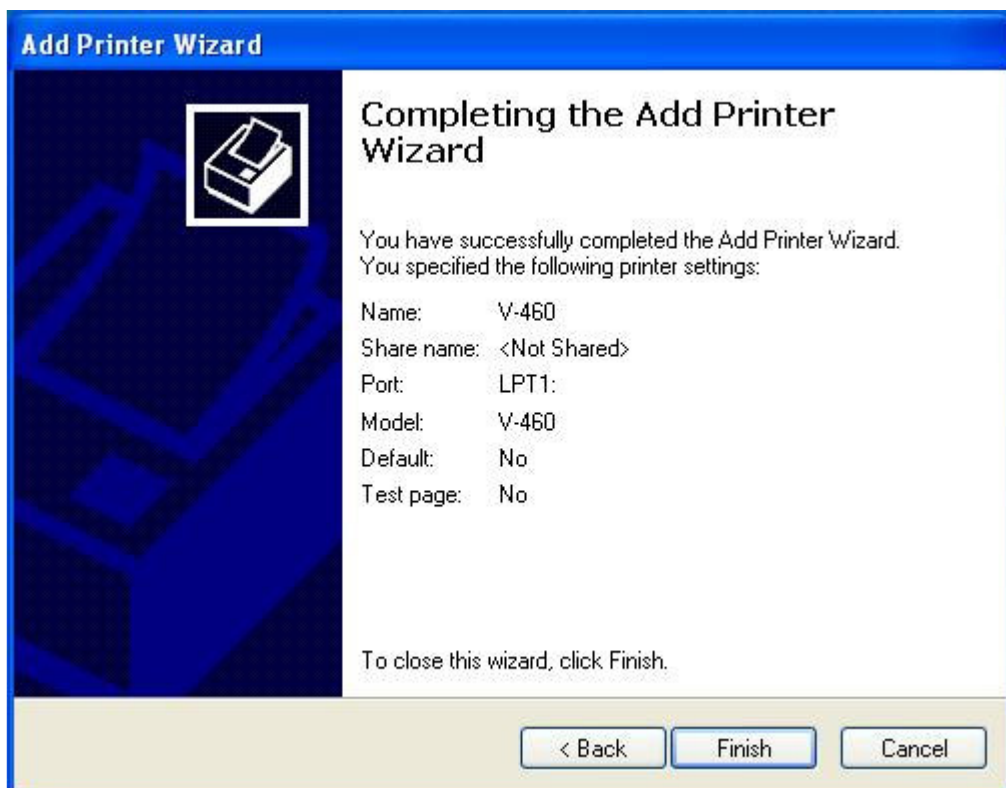
☒ Do not share this printer
☐ Share name:

< Back Next > Cancel

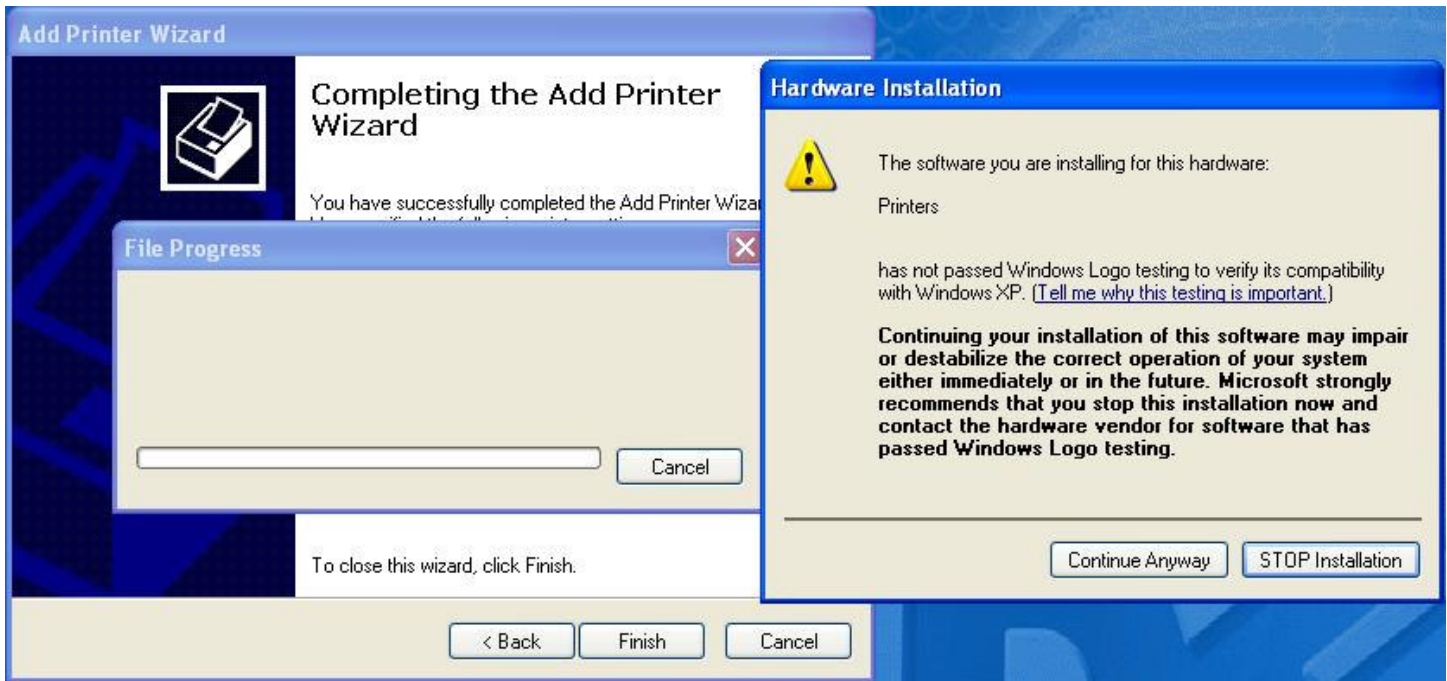
Step 20 – The following window appears. Click **No** for **Do you want to print a test page** and click **Next** to continue the installation:



Step 21 – The following window appears. Click **Finish** to complete the installation:



Step 22 – The following appears. The File Progress boxes will close on their own after file transfers are complete; usually in less than a minute. The Hardware Installation dialog box appears as well stating that this software has not passed Windows Logo testing. Click **Continue Anyway** and the installation will be complete; all open dialog boxes on the desktop will now close by themselves:



Step 23 – Open the printers and faxes folder to verify that the new printer driver has been successfully installed. The installation is now complete:

